



# Crossing Point Villas

Sign up for our waiting list now!

**AFFORDABLE  
RENTAL  
HOUSING**

**COMING SOON!**  
STARTING AUGUST 2014!

**RENT STARTING AT \$331 PER MONTH**

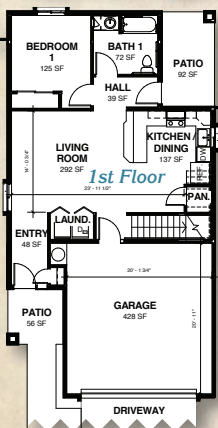
Rent rates depend upon income eligibility. Contact 520-458-1666 for more information.\*

*Sierra Housing Resource Partners Invites You to  
Sierra Vista's First Affordable Housing Development!*

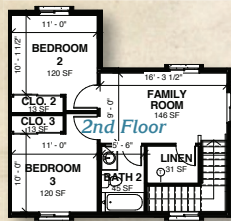
**4  
BEDROOM  
FLOORPLAN**  
1602 Sq. Ft.



**\$453 to  
\$747**  
Per Month\*



**3  
BEDROOM  
FLOORPLAN**  
1425 Sq. Ft.



**\$389 to  
\$670**  
Per Month\*



**2 BEDROOM FLOORPLAN**  
1123 Sq. Ft.



**\$331 to  
\$452**  
Per Month\*



For more information call us at 520-458-1666  
or go to [www.CrossingPointVillas.com](http://www.CrossingPointVillas.com).

Ask about the First West Properties Corporation Rent-to-Own Program!



\*Rent rates depend upon income eligibility. All rates are subject to market conditions and may change at any time without notice.  
Rates quoted 06/04/14. Contact 520-458-1666 for more information. BK0902429



*This Project Brought to You by...*

**SIERRA HOUSING RESOURCE PARTNER, INC.**

**An Arizona Not for Profit 501(c) 3 Corporation**

Sierra Housing Resource Partner, Inc. (SHRP) was incorporated in June of 2004 and is the only "not for profit" affordable housing corporation in Cochise County.

In keeping with their mission to identify and acquire properties that are suitable for low cost housing, the first property to be developed by SHRP is called CROSSING POINT. It consists of approximately 12 acres located between North & South Railroad Streets from 7th Street west to Canyon Drive in Sierra Vista, AZ. Grading has been completed. Construction is next.

In collaboration with...



**Arizona  
Department  
of Housing**



**FIRST WEST  
PROPERTIES CORPORATION**

**FHLBank  
San Francisco**



**RCAC**  
Rural Community  
Assistance Corporation



**LA FRONTERA  
ARIZONA**

*Your partner for a safe, strong, and healthy community.*

**National  
Equity  
Fund**   
*an affiliate of LISC*

